

3' FLEX-HOSE PART NUMBER B2948
(CONNECTION BETWEEN TURBINE AND VALVE
CAN BE EXTENDED USING RIGID TUBING)

NOTE: TURBINE UNIT MUST BE
SETTING FLAT ON ITS BOTTOM
AS SHOWN TO OPERATE PROPERLY.

120 VOLT 60Hz
20 AMP
DUPLEX OUTLET

SIDE VIEW
16"

PVC 20" RADIUS
BEND WITH 3" PORT
SUPPLIED WITH SYSTEM

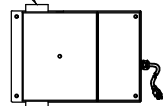
IRT-5000 CUSTOMER UNIT
SEE DRAWING 99-888

TUBING BETWEEN THE
BENDS AND ABOVE
CUSTOMER UNIT MUST
BE ORDER SEPARATELY

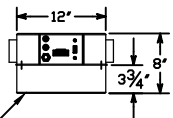
COUNTER TOP
TELLER STATION
DWG 99-1028

TURBINE DETAILS
PART NUMBER B10004

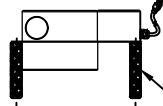
TURBINE CONNECTION PORT
LOCATED ON THIS SIDE
FOR CONNECTION TO SYSTEM



TOP VIEW



FRONT VIEW



SIDE VIEW

BOTTOM OF UNIT

SUPPORT STRUCTURE SHOWN
LOCATED ON 16" CENTERS

ONE DUPLEX OUTLET
FOR EVERY TWO LANES
120 VOLT 20 AMP.

4" DIA. PORT
FOR EXHAUST

NOTE: TURBINE MAY BE REMOTELY LOCATED
IN UTILITY CLOSET, MECHANICAL ROOM, ETC.

est. 1967

HAMILTON
CUSTOM MADE SECURITY

PROPRIETARY AND CONFIDENTIAL
THESE DRAWINGS ARE THE PROPERTY
OF HAMILTON SAFE CO. AND SHALL
NOT BE REPRODUCED, COPIED, USED
AS THE BASIS FOR MANUFACTURE OR
SALE OF APPARATUS WITHOUT
PERMISSION

DESCRIPTION

MODEL IRT-5000
INTERACTIVE REMOTE TELLER
WITH COUNTER TOP TELLER UNIT

DRAWING/MODEL NUMBER
99-1080

DATE
10/08/2021